

ODESD2TM

Materials

Contents

VENEER	3
SOLID WOOD	5
COLOR	6
TEXTILE	11
LEATHER	33
ECO LEATHER	41

VENEER



Oak
oak



Maple
maple



European Nut
nut



Ash
ash



Beech
beech



Birch
birch

SOLID WOOD



Oak
Sl.oak



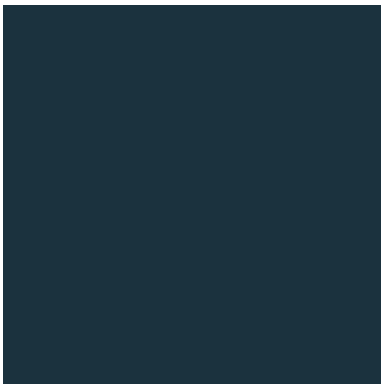
Maple
Sl.maple



Ash
Sl.ash

COLOR

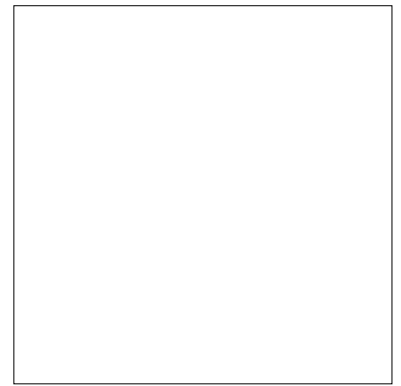
BASIC



RAL 7016

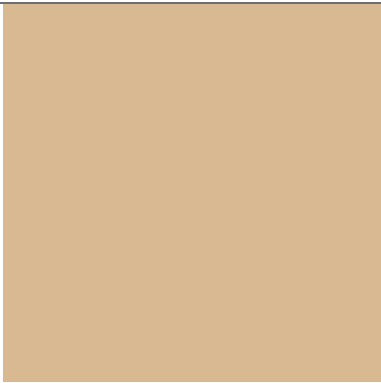


RAL 9005

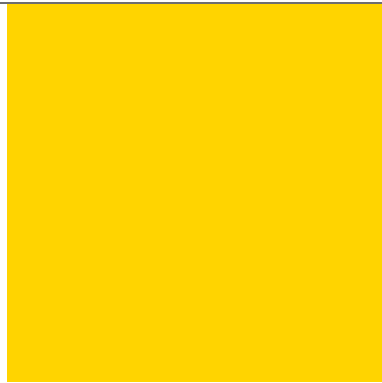


RAL 9010

INDIVIDUAL*



RAL 1001



RAL 1018



RAL 1019



RAL 1033



RAL 1034

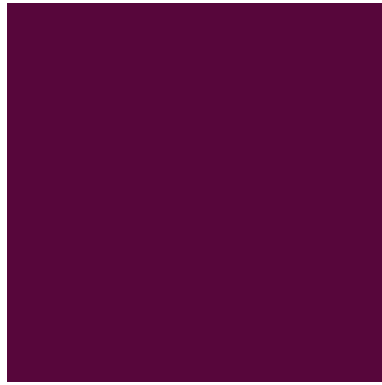


RAL 2001

*in case of choosing custom coloring palette, please specify production time with manager



RAL 2012



RAL 3007



RAL 3020



RAL 3028



RAL 4003



RAL 4008



RAL 5004



RAL 5011



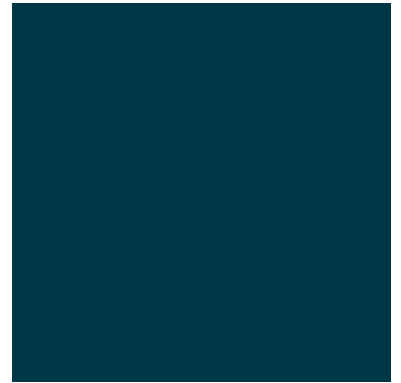
RAL 5012



RAL 5015



RAL 5019



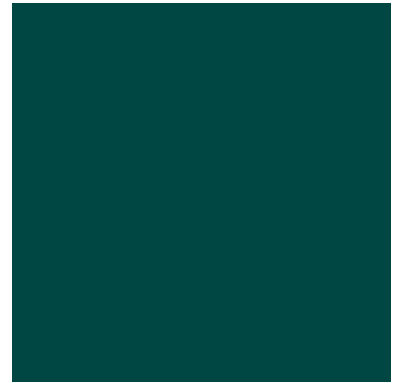
RAL 5020



RAL 5021



RAL 5024



RAL 6004



RAL 6010



RAL 6011



RAL 6012



RAL 6017



RAL 6034



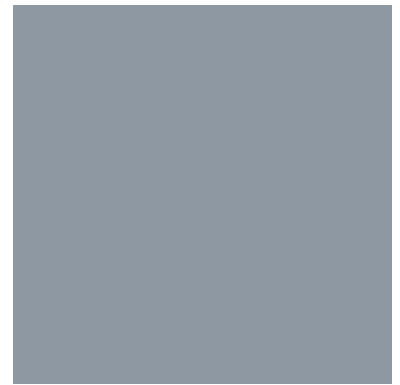
RAL 7002



RAL 7011



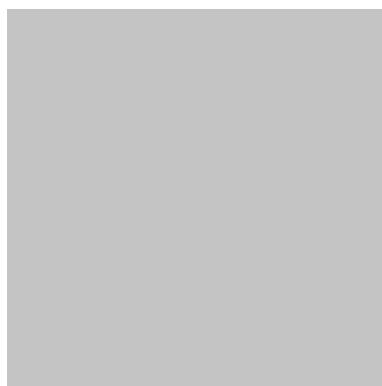
RAL 7031



RAL 7040



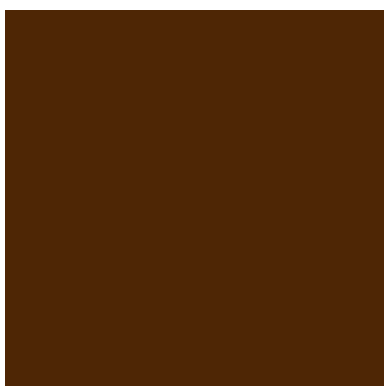
RAL 7044



RAL 7047



RAL 8001



RAL 8011

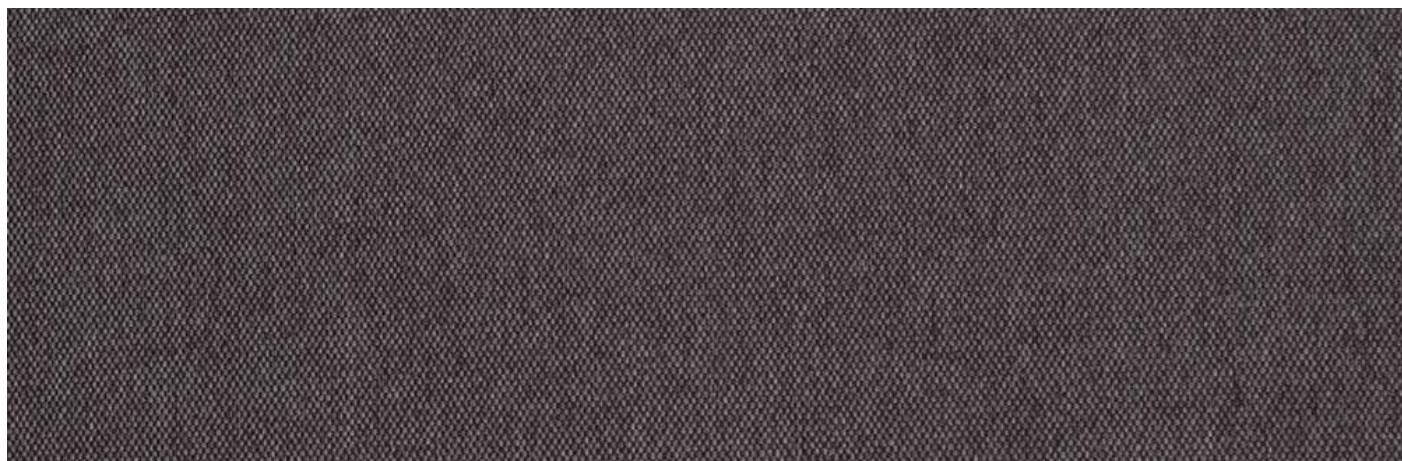


RAL 8019



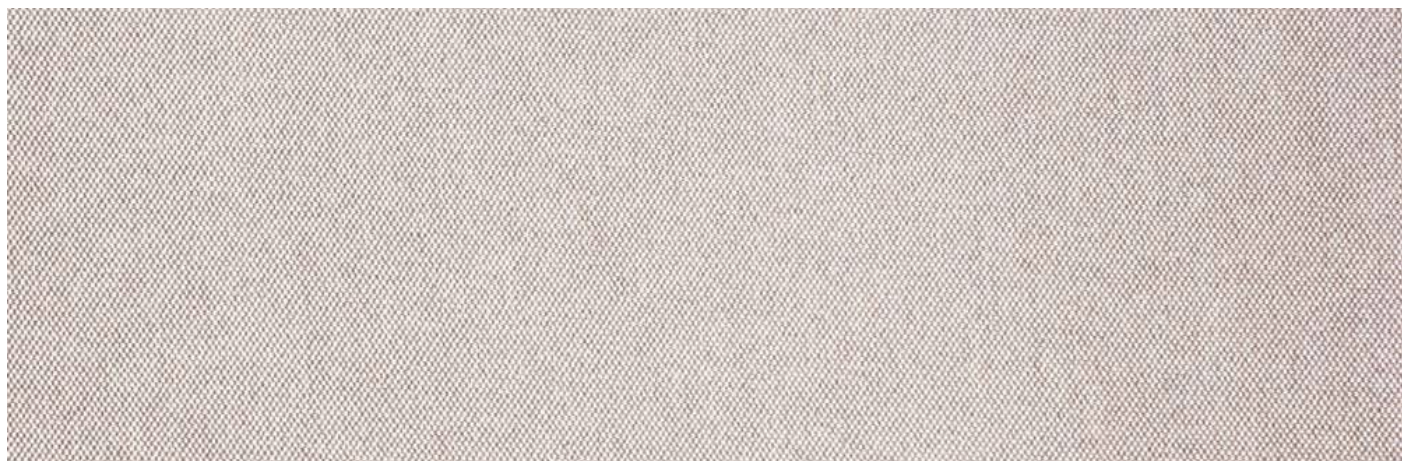
RAL 9016

TEXTILE / MICRO-MATTING



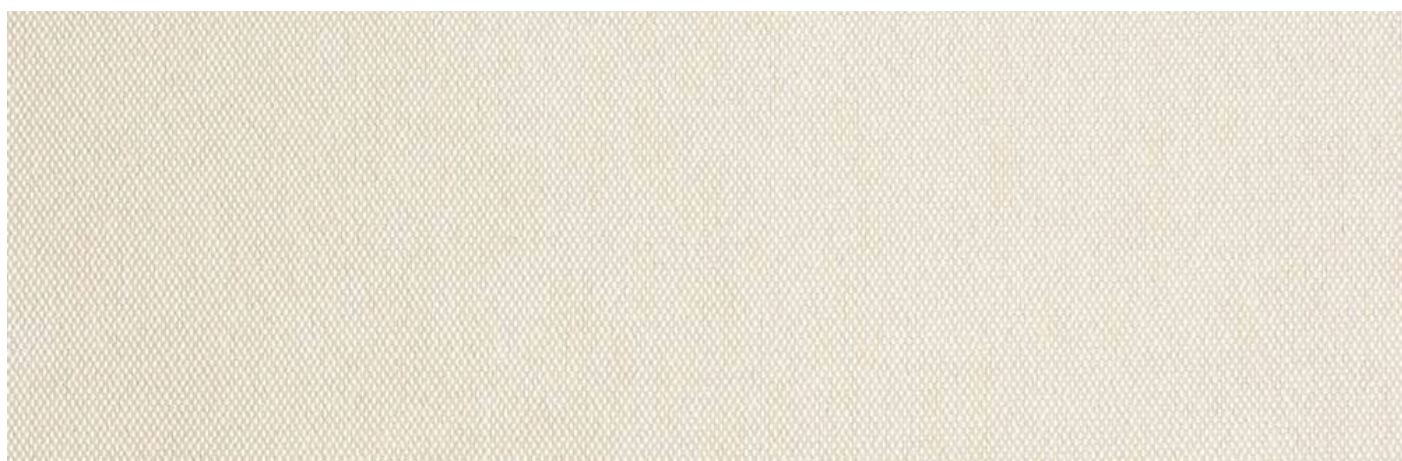
ETN 10

330 g/m² | 69 000^{cycles}



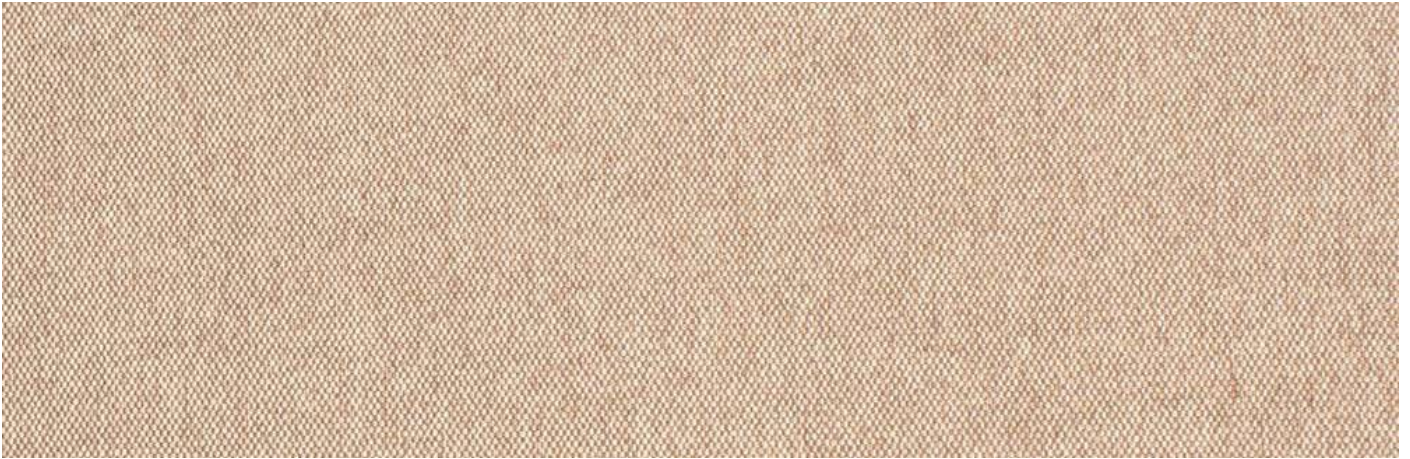
ETN 15

330 g/m² | 69 000^{cycles}



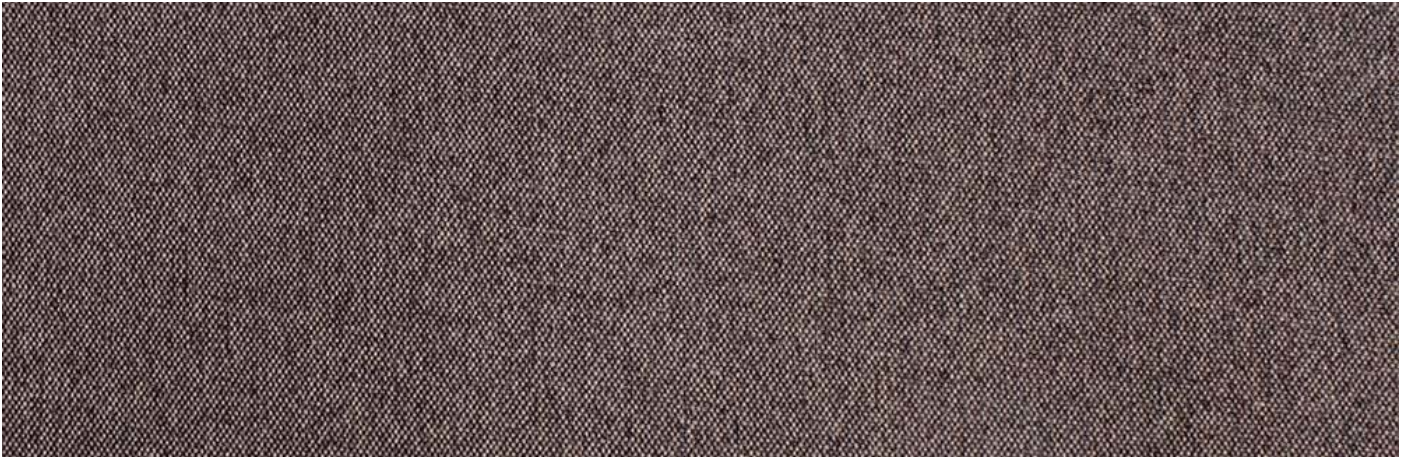
ETN 21

330 g/m² | 69 000^{cycles}



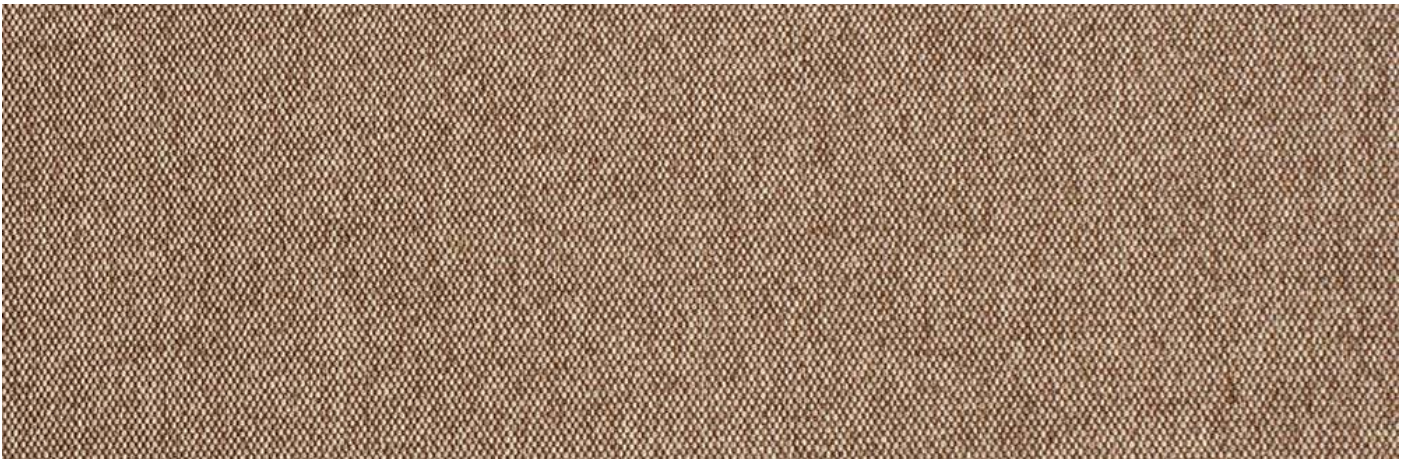
ETN 22

330 g/m² | 69 000^{cycles}



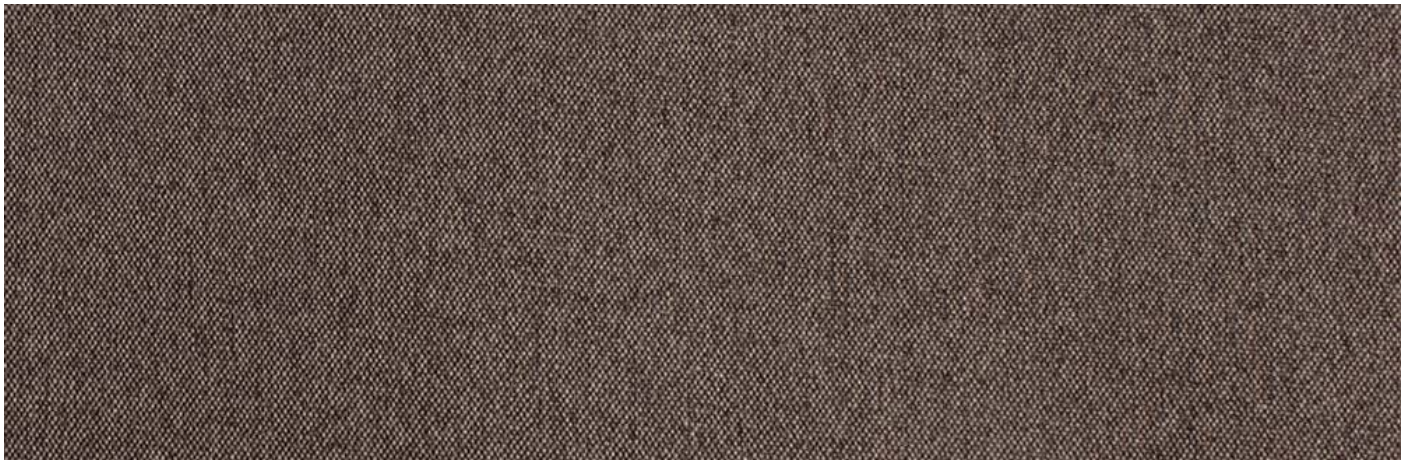
ETN 23

330 g/m² | 69 000^{cycles}



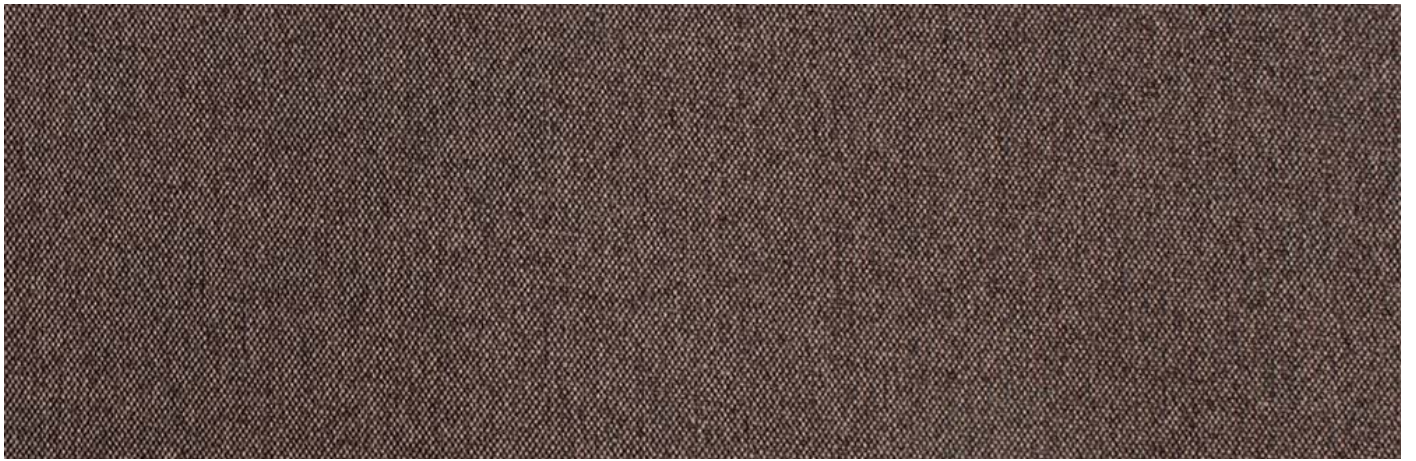
ETN 24

330 g/m² | 69 000^{cycles}



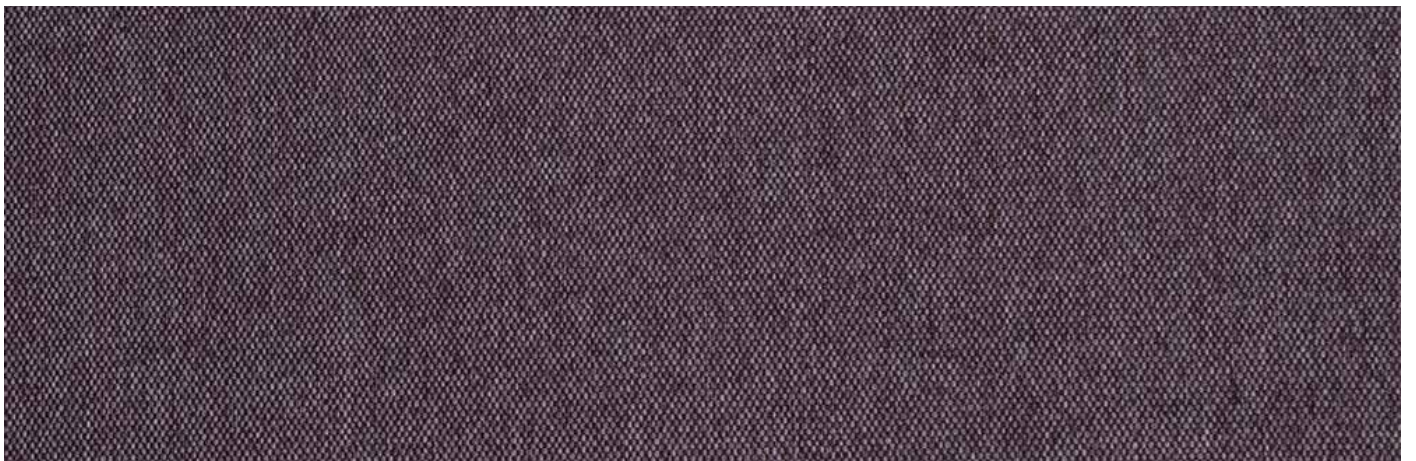
ETN 25

330 g/m² | 69 000^{cycles}



ETN 27

330 g/m² | 69 000^{cycles}



ETN 28

330 g/m² | 69 000^{cycles}



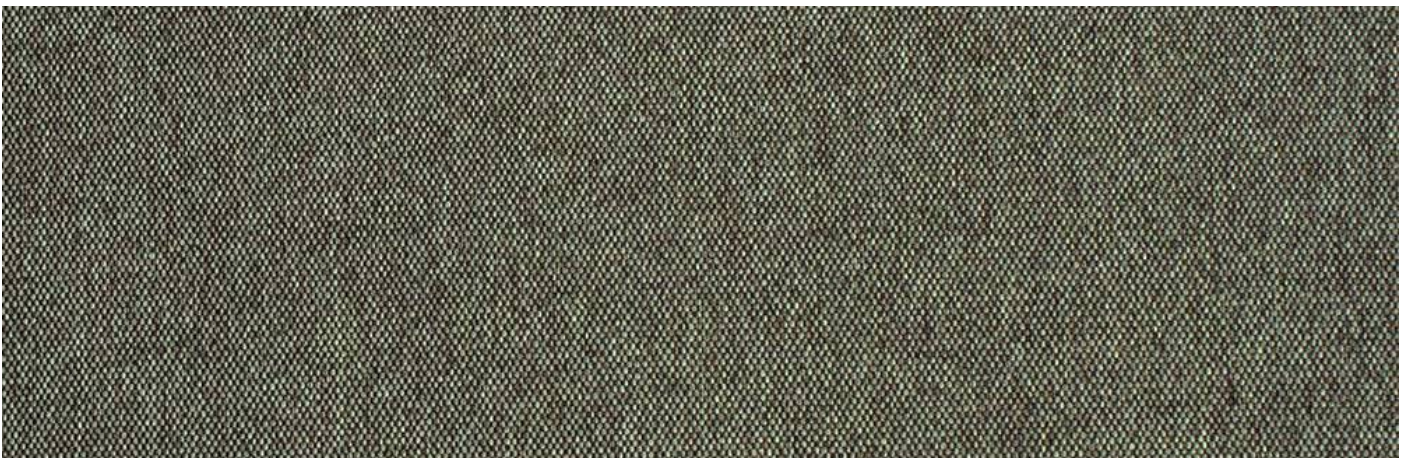
ETN 35

330 g/m² | 69 000^{cycles}



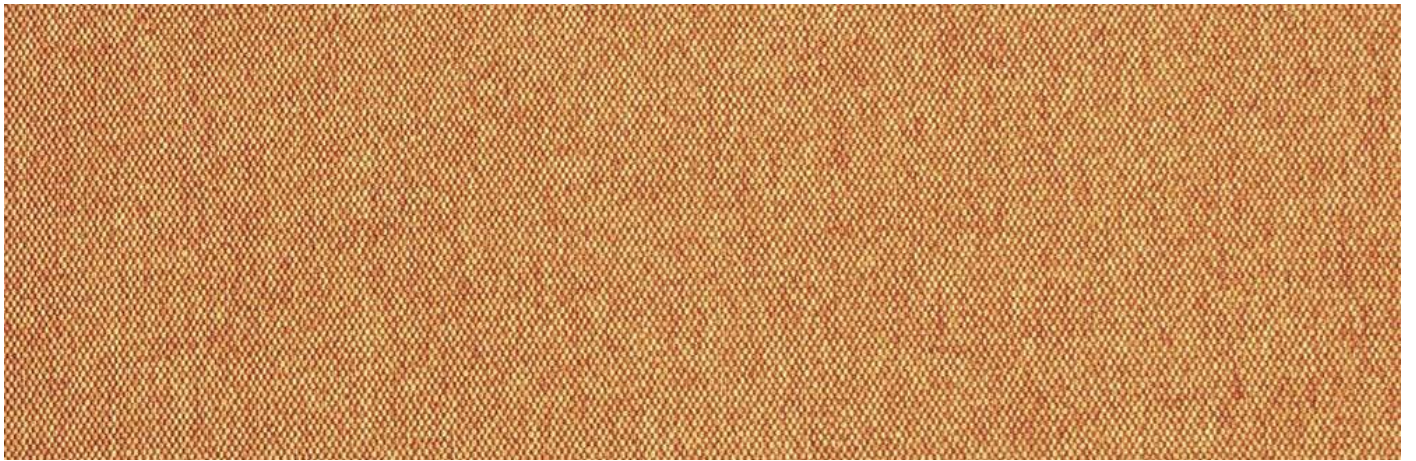
ETN 37

330 g/m² | 69 000^{cycles}



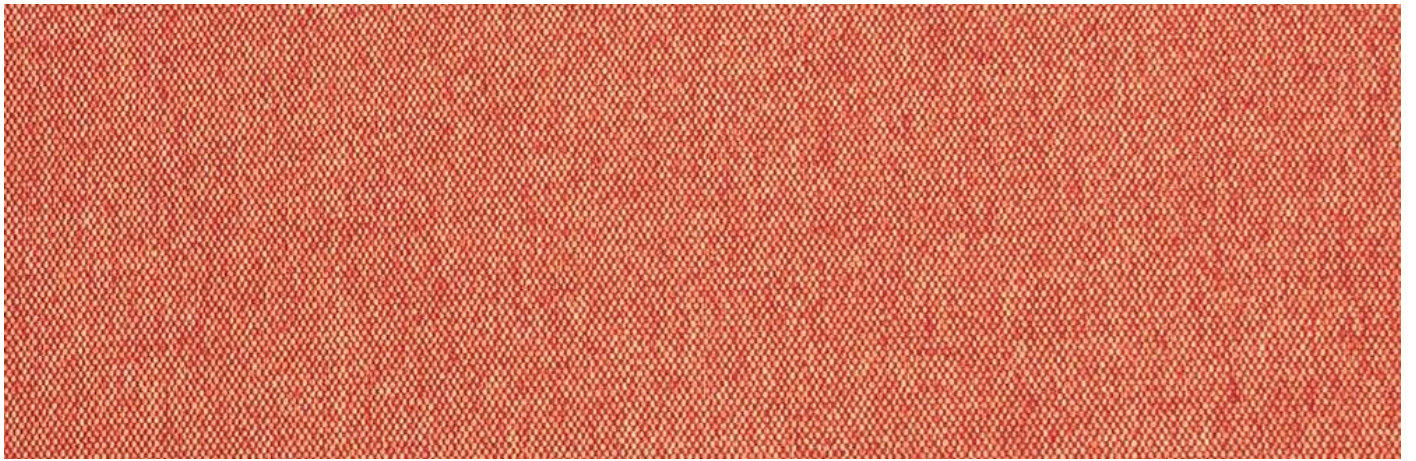
ETN 38

330 g/m² | 69 000^{cycles}



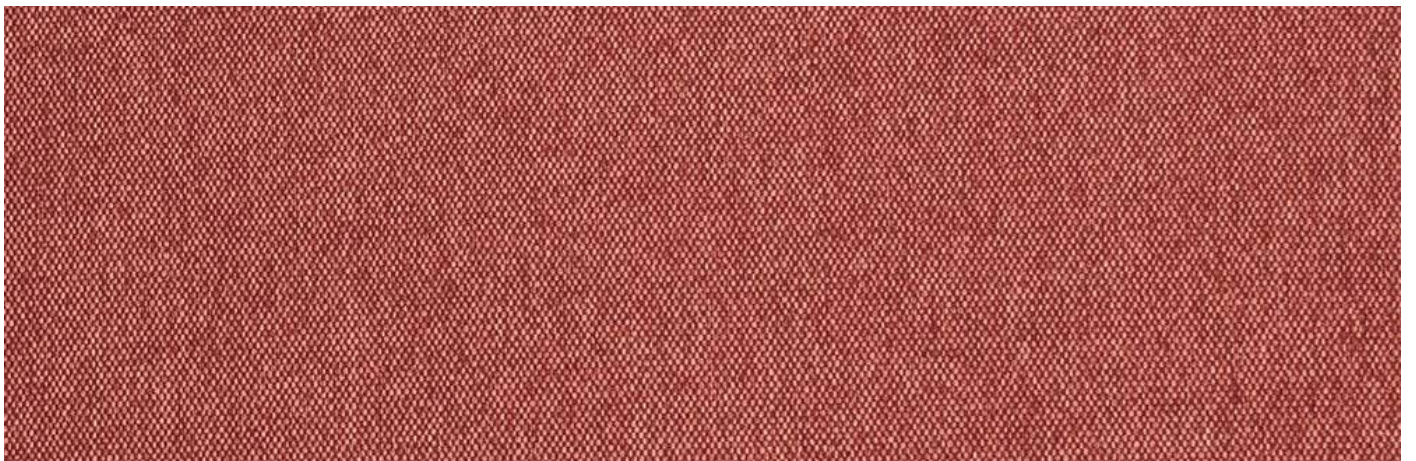
ETN 48

330 g/m² | 69 000^{cycles}



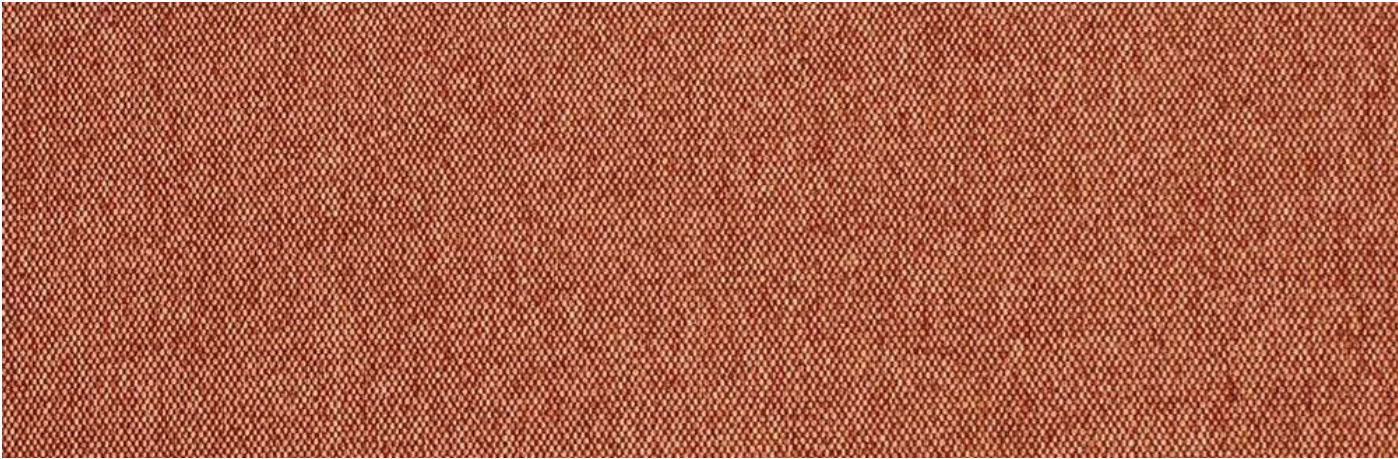
ETN 51

330 g/m² | 69 000^{cycles}



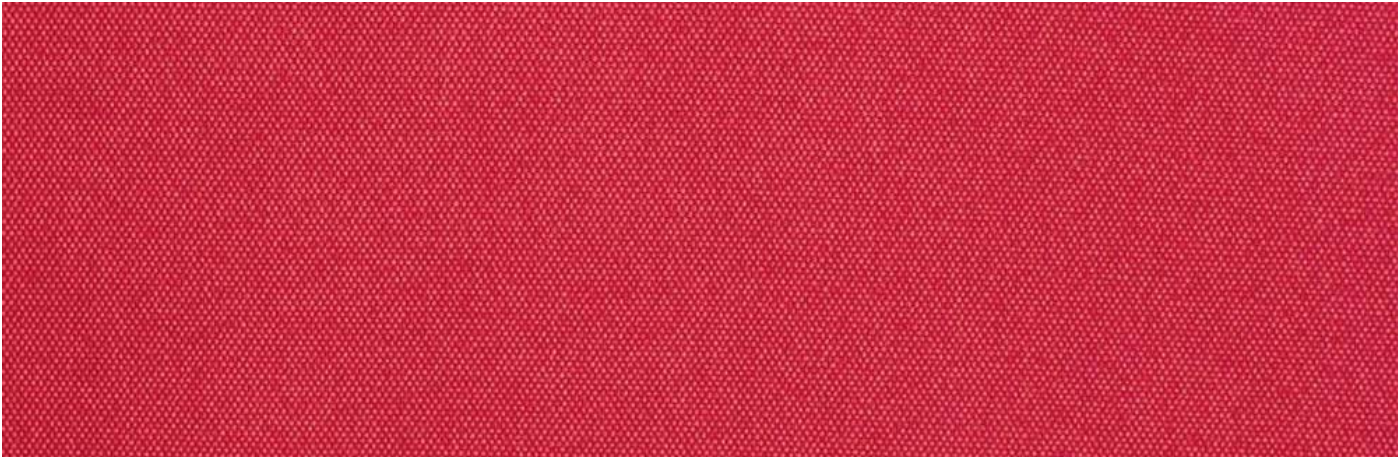
ETN 55

330 g/m² | 69 000^{cycles}



ETN 56

330 g/m² | 69 000^{cycles}



ETN 60

330 g/m² | 69 000^{cycles}



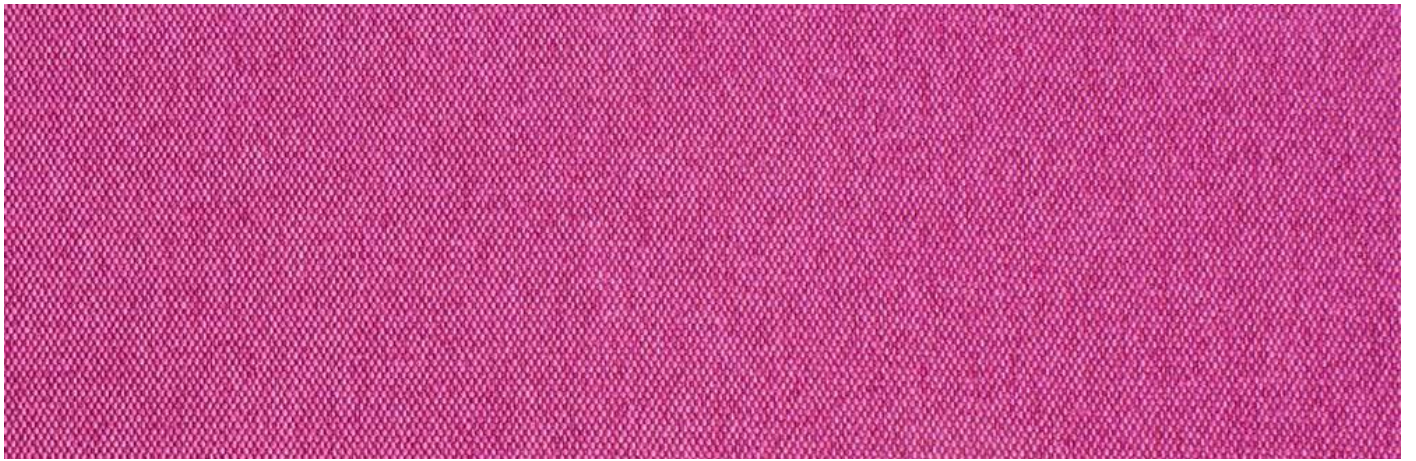
ETN 65

330 g/m² | 69 000^{cycles}



ETN 77

330 g/m² | 69 000^{cycles}



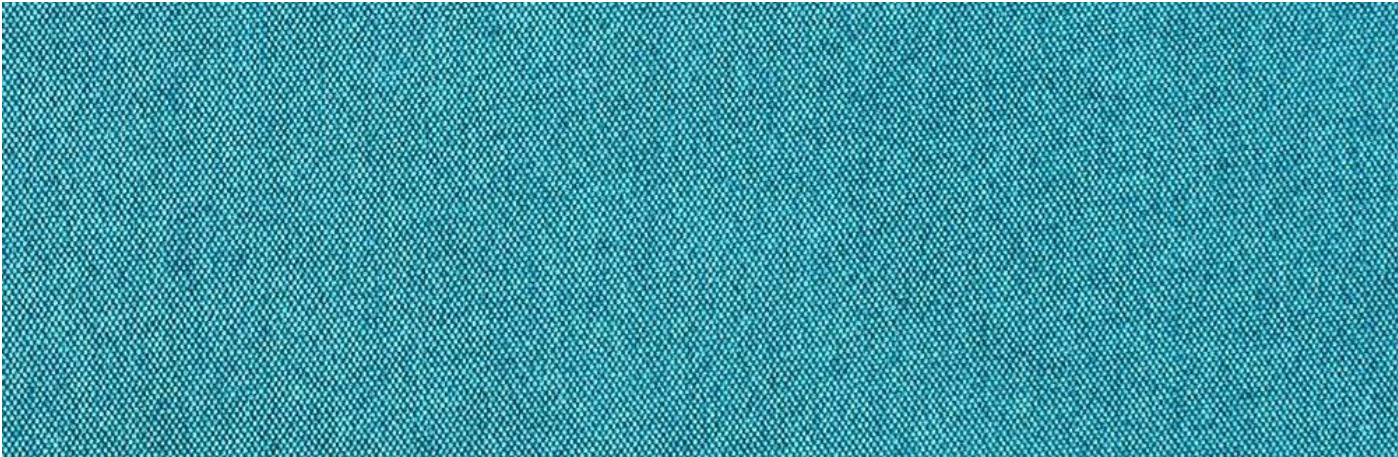
ETN 78

330 g/m² | 69 000^{cycles}



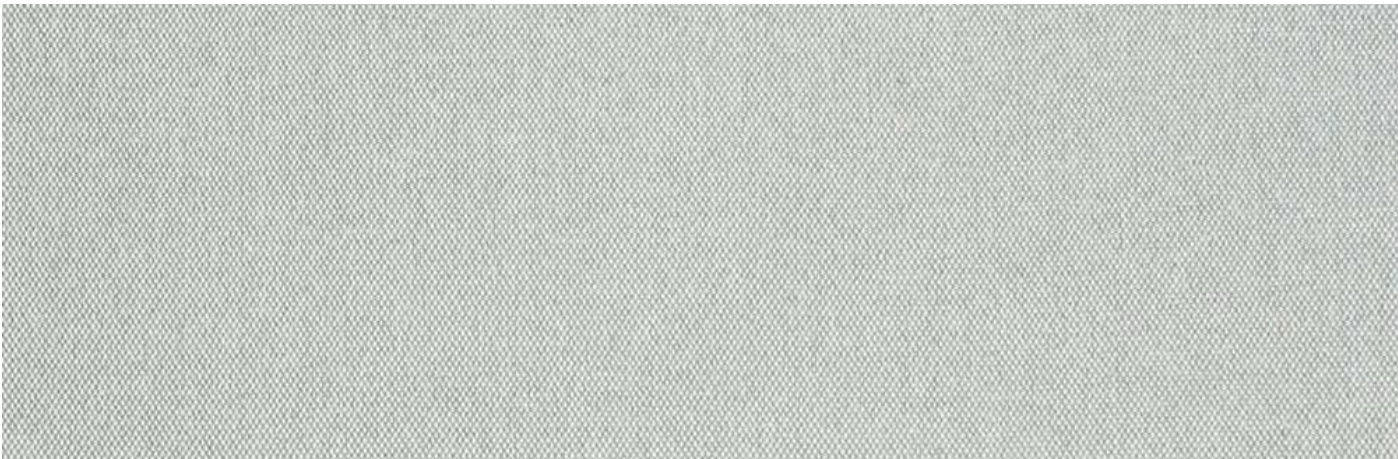
ETN 80

330 g/m² | 69 000^{cycles}



ETN 85

330 g/m² | 69 000^{cycles}



ETN 90

330 g/m² | 69 000^{cycles}



BR 4

530 g/m² | 30000^{cycles}



ETN 95

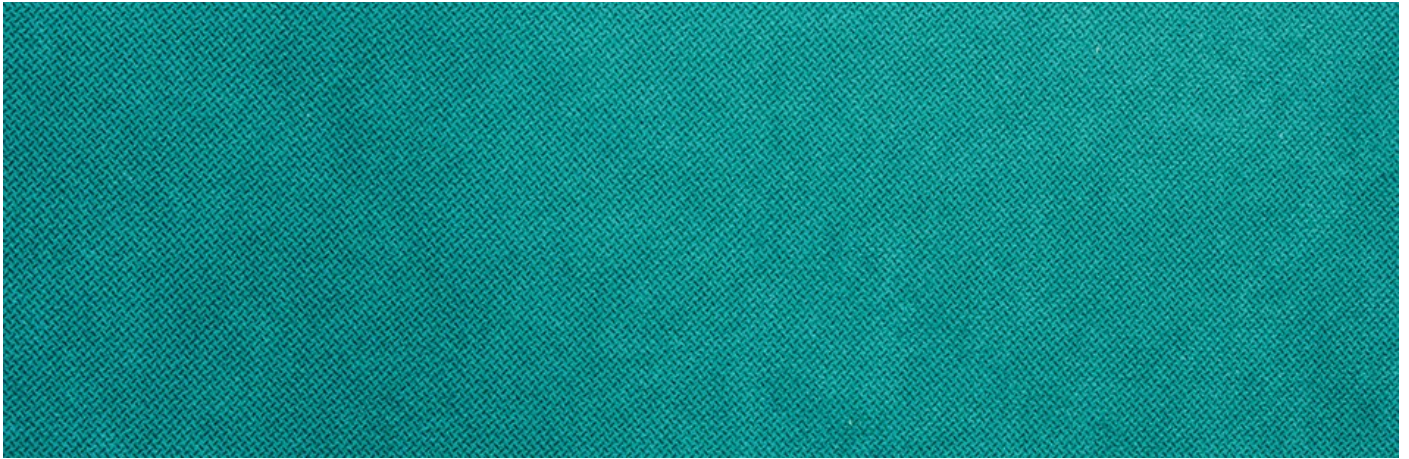
330 g/m² | 69 000^{cycles}



BR 11

530 g/m² | 30000^{cycles}

TEXTILE / MICROFIBRE



AMR 006

420 g/m² | 100000^{cycles}



AMR 009

420 g/m² | 100000^{cycles}



AMR 012

420 g/m² | 100000^{cycles}



AMR 015

420 g/m² | 100000^{cycles}



AMR 022

420 g/m² | 100000^{cycles}



AMR 025

420 g/m² | 100000^{cycles}



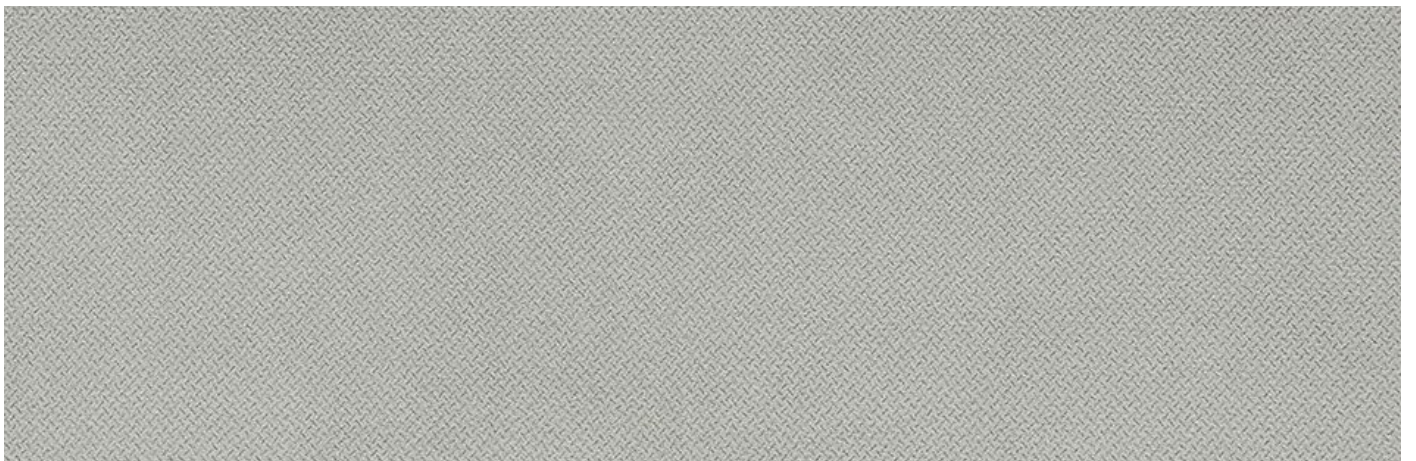
AMR 028

420 g/m² | 100000^{cycles}



AMR 030

420 g/m² | 100000^{cycles}



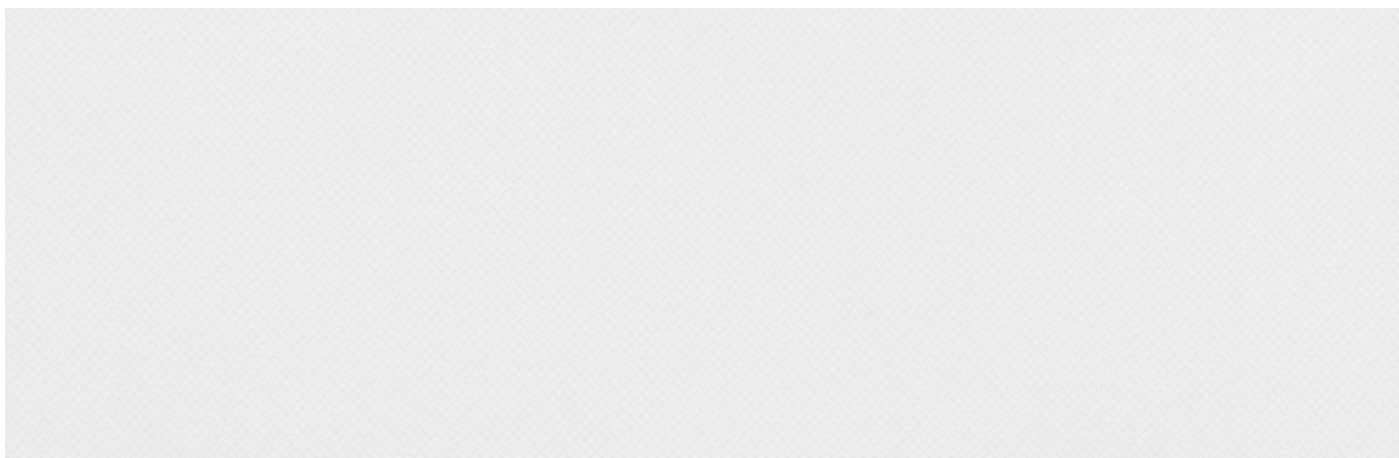
AMR 031

420 g/m² | 100000^{cycles}



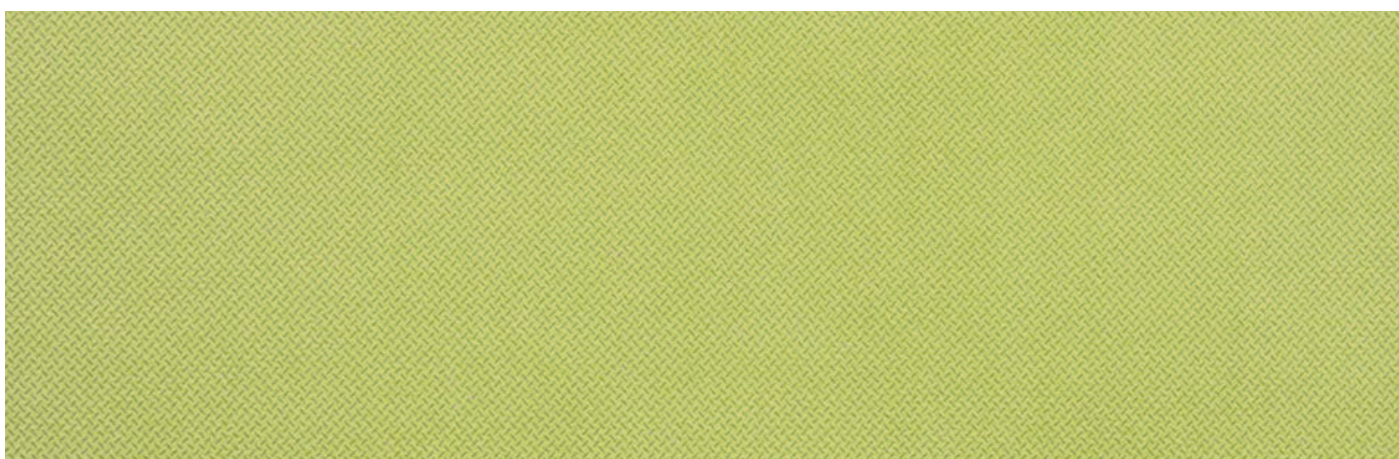
AMR 032

420 g/m² | 100000^{cycles}



AMR 037

420 g/m² | 100000^{cycles}



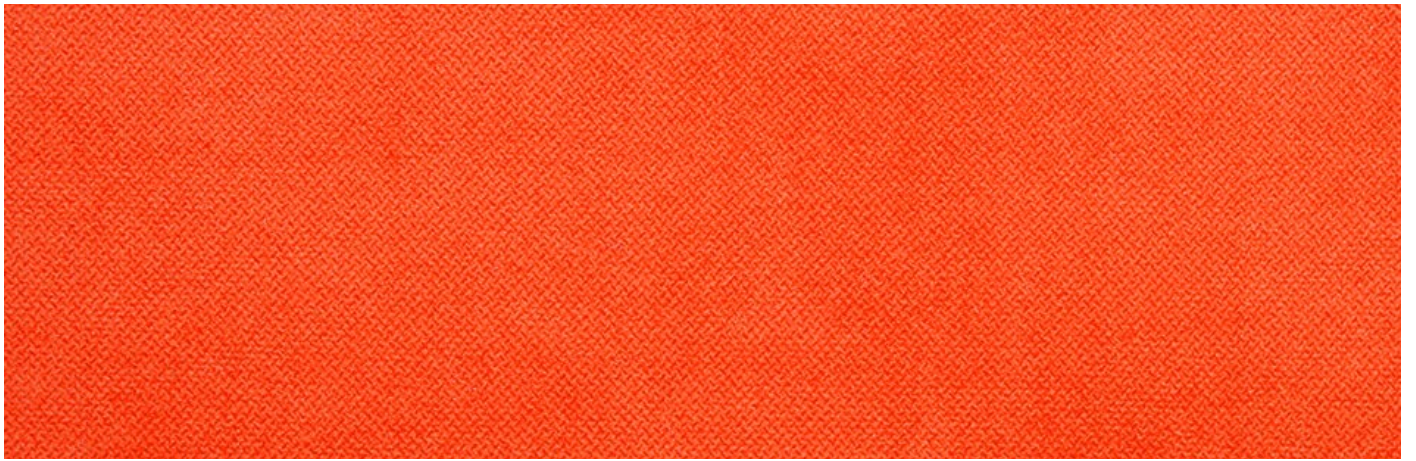
AMR 038

420 g/m² | 100000^{cycles}



AMR 041

420 g/m² | 100000^{cycles}



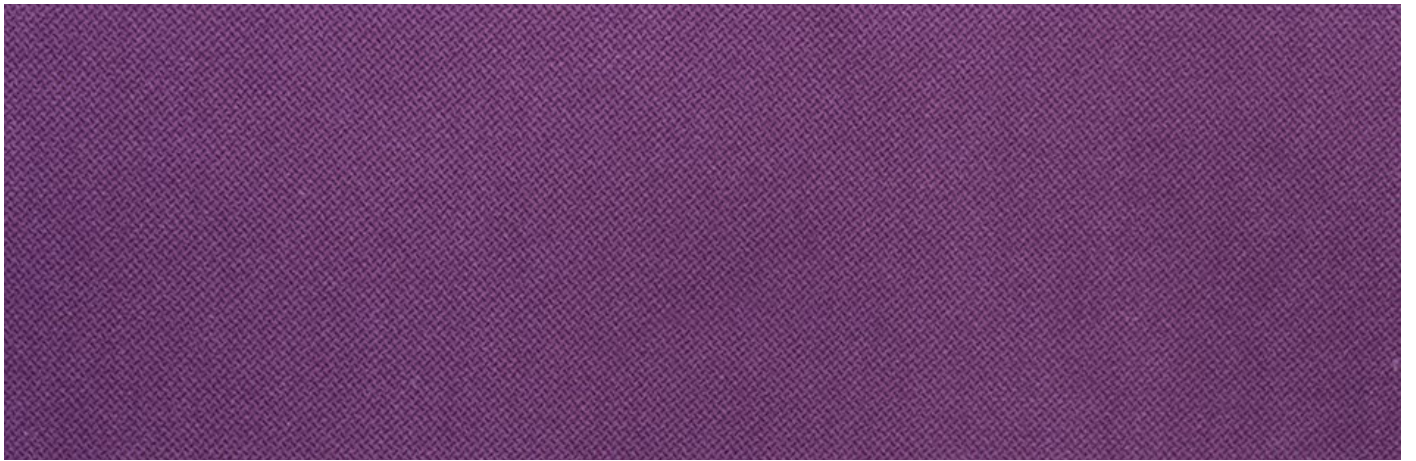
AMR 044

420 g/m² | 100000^{cycles}



AMR 045

420 g/m² | 100000^{cycles}



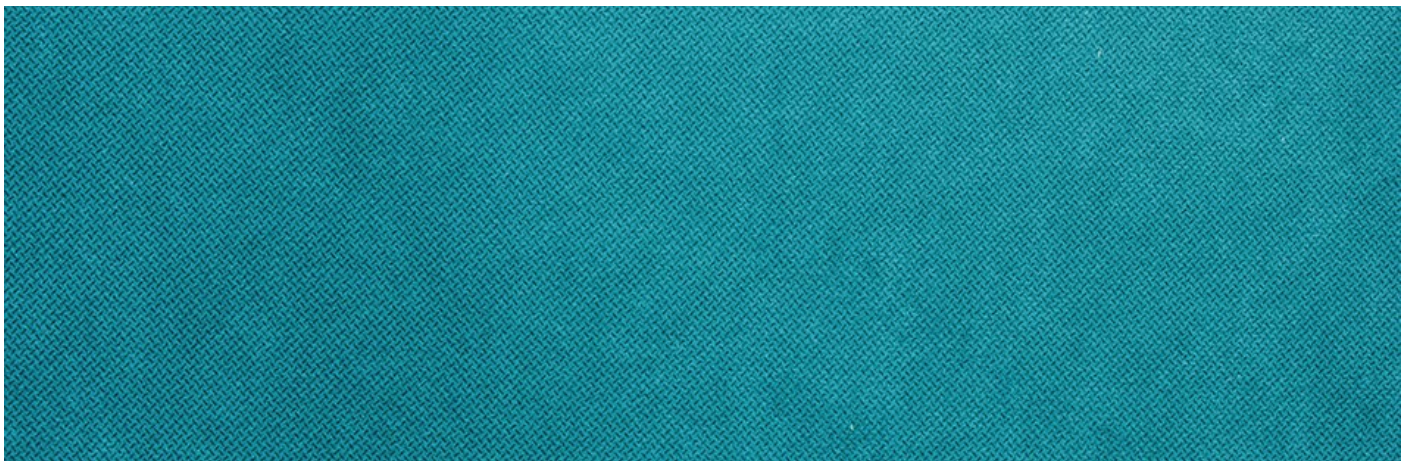
AMR 046

420 g/m² | 100000^{cycles}



AMR 057

420 g/m² | 100000^{cycles}



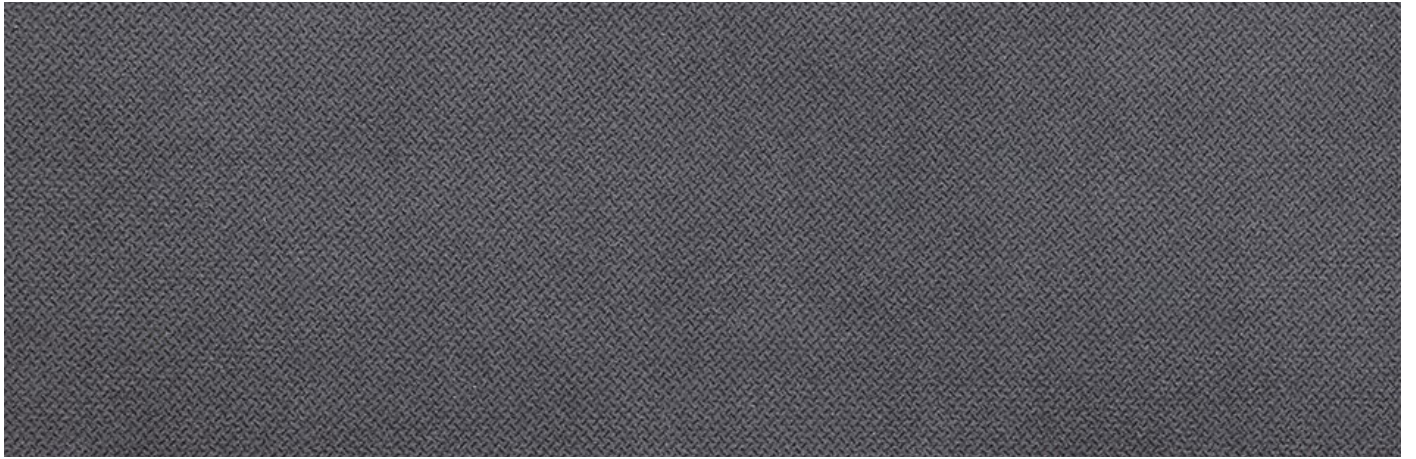
AMR 066

420 g/m² | 100000^{cycles}



AMR 084

420 g/m² | 100000^{cycles}



AMR 104

420 g/m² | 100000^{cycles}



AMR 105

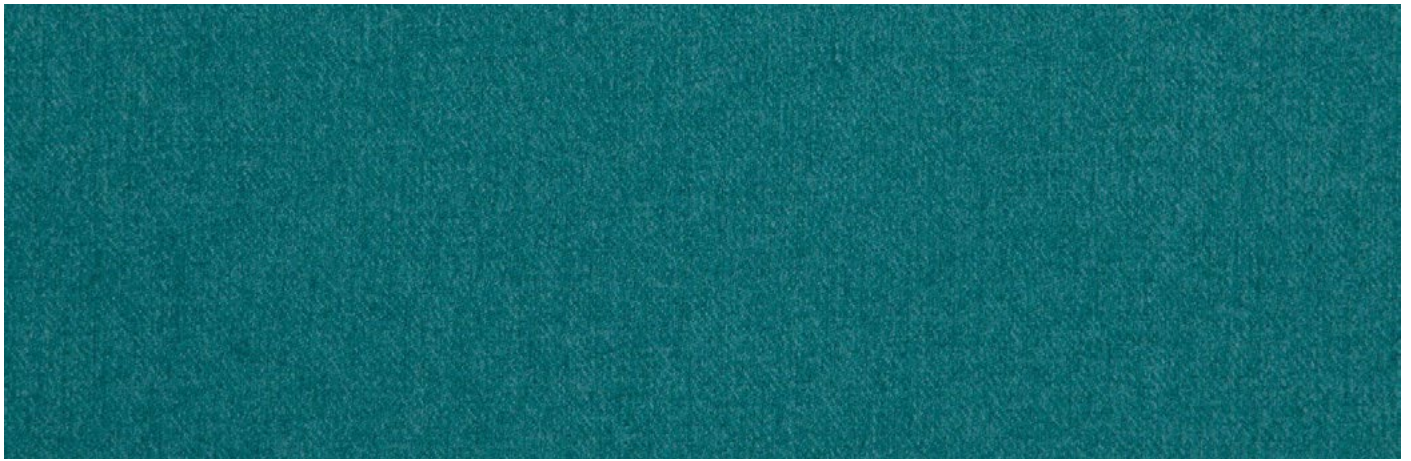
420 g/m² | 100000^{cycles}

TEXTILE / WOOVEN FABRIC



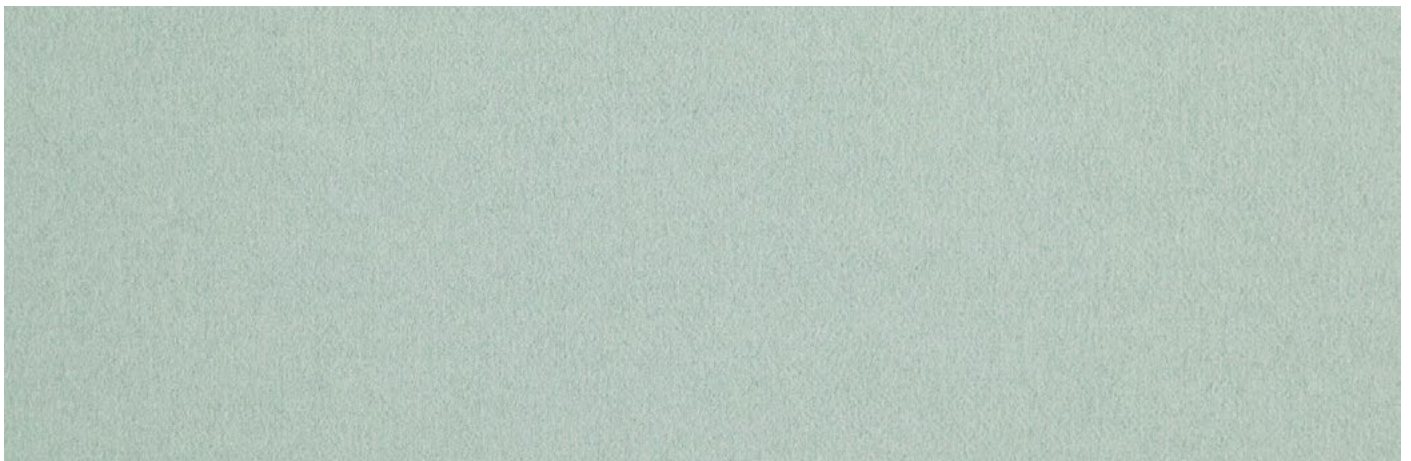
Braveheart 01-Spruce

397 g/m² | >100000^{cycles}



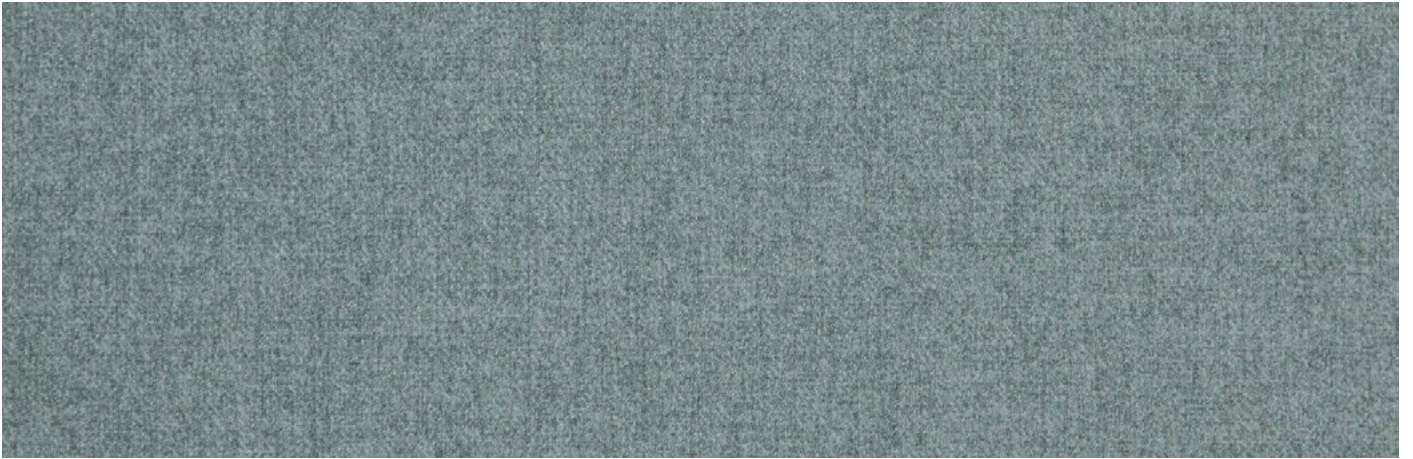
Braveheart 02-Emerald

397 g/m² | >100000^{cycles}



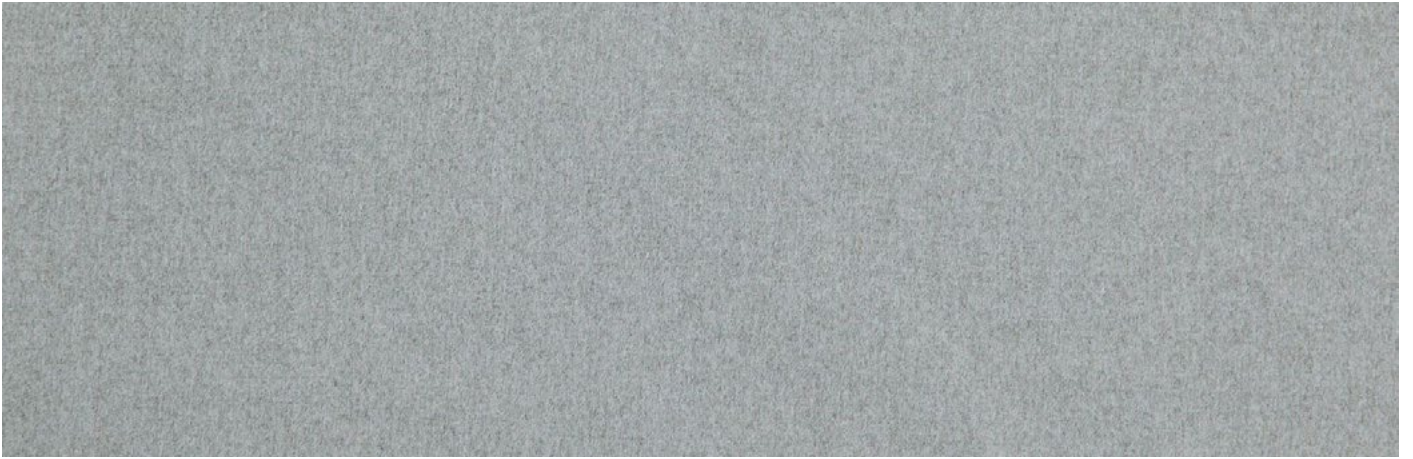
Braveheart 04-Mineral

397 g/m² | >100000^{cycles}



Braveheart 05-Spa

397 g/m² | >100000^{cycles}



Braveheart 06-Pigeon

397 g/m² | >100000^{cycles}



Braveheart 08-Silver

397 g/m² | >100000^{cycles}



Braveheart 10-Shadow

397 g/m² | >100000^{cycles}



Braveheart 11-Charcoal

397 g/m² | >100000^{cycles}



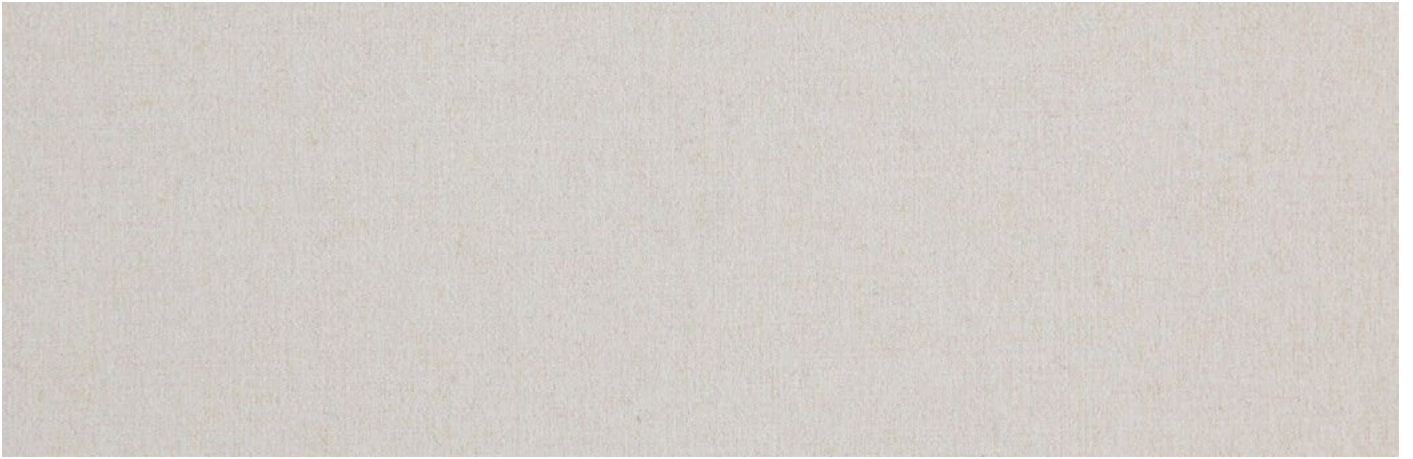
Braveheart 12-Pinecone

397 g/m² | >100000^{cycles}



Braveheart 15-Chinchilla

397 g/m² | >100000^{cycles}



Braveheart 17-Angora

397 g/m² | >100000^{cycles}



Braveheart 19-Pistachio

397 g/m² | >100000^{cycles}



Braveheart 21-Gold

397 g/m² | >100000^{cycles}



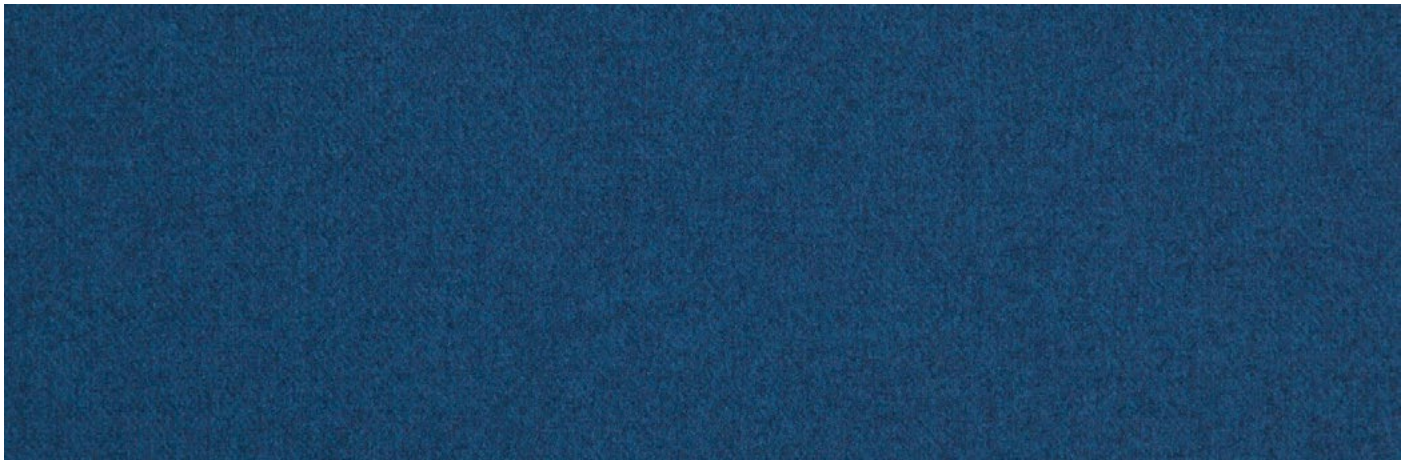
Braveheart 24-Sunset

397 g/m² | >100000^{cycles}



Braveheart 26-Cardinal

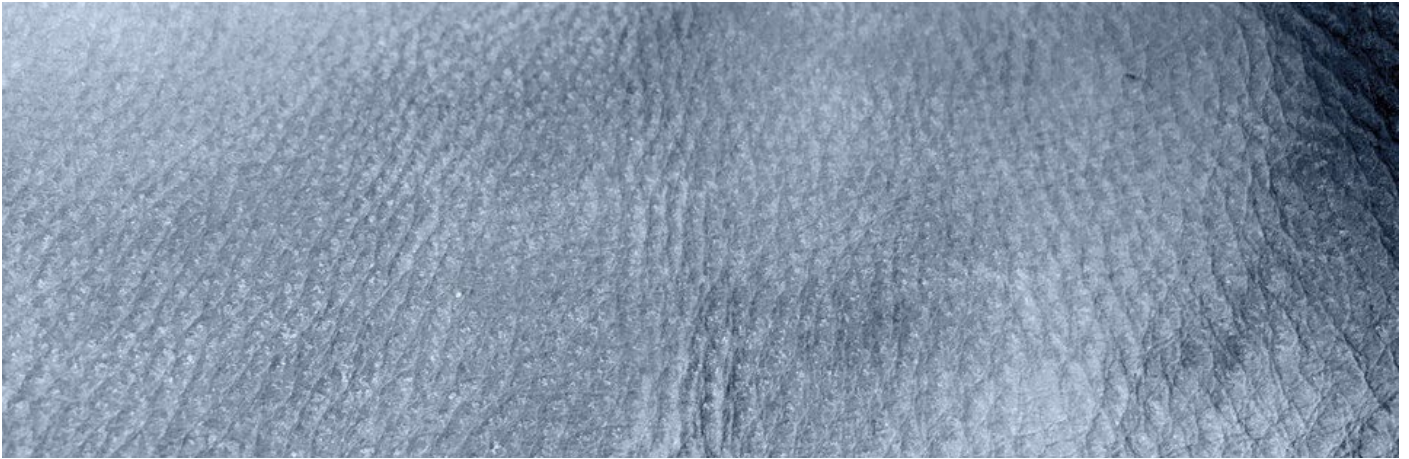
397 g/m² | >100000^{cycles}



Braveheart 33-Navy

397 g/m² | >100000^{cycles}

LEATHER



Rainer glacier



Butero l.3322



Lux vino



Lux wood



Tornado dusk



Tornado bisq



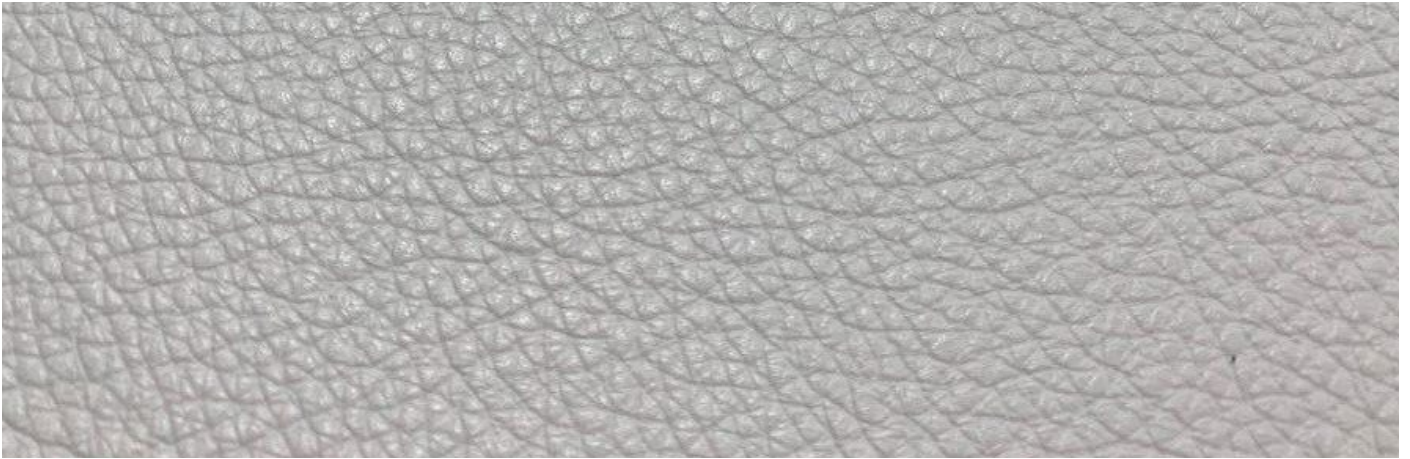
Tornado t-1 (s)



Tornado mexico



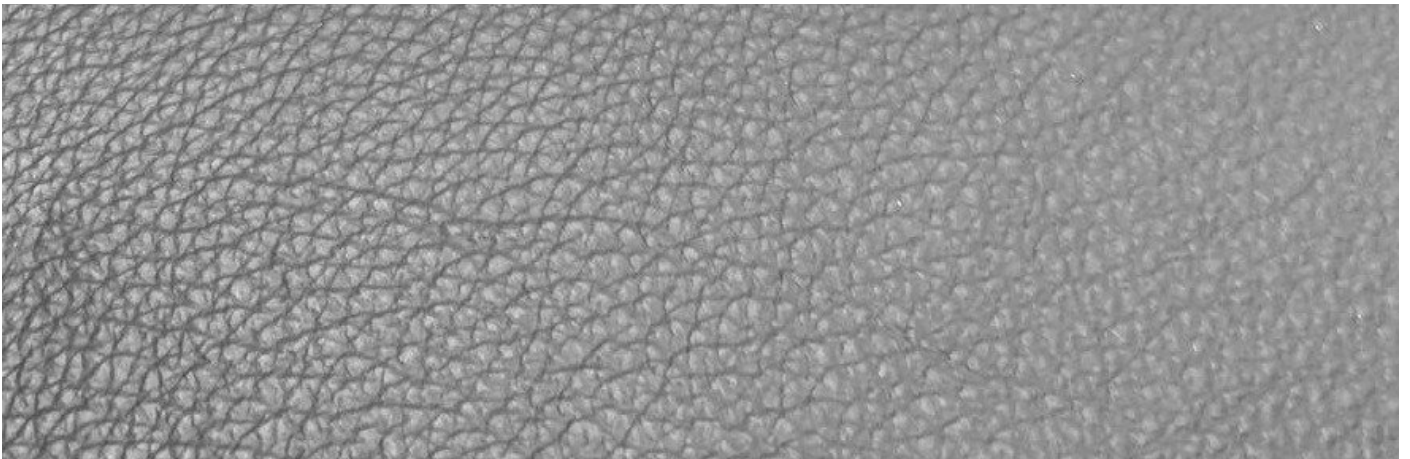
Tornado night



Dollaro bianco



Dollaro 654



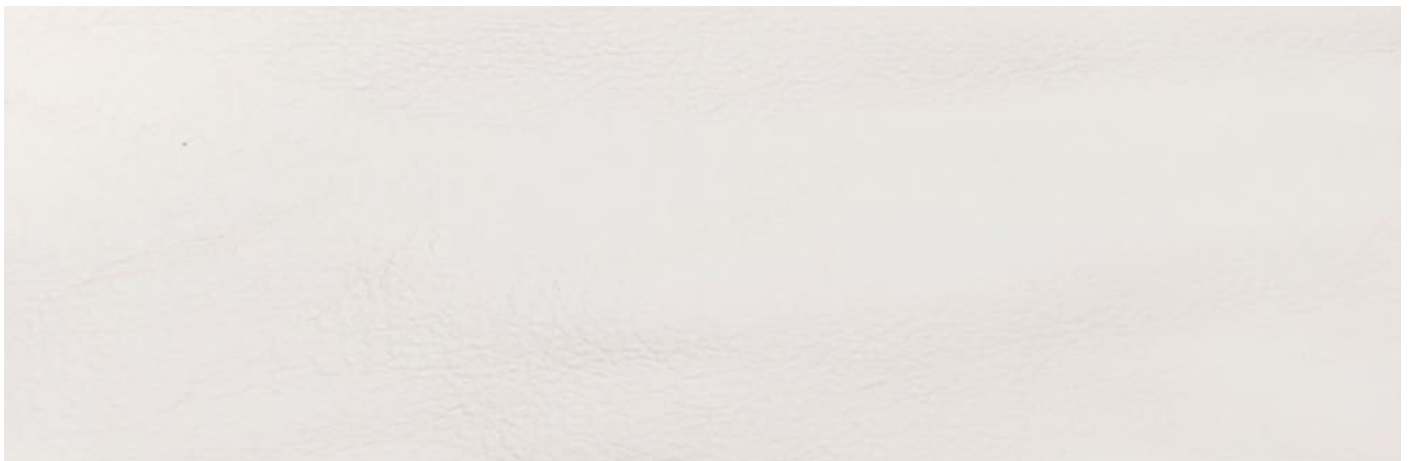
Dollaro t.moro



Madras 19



Madras gold



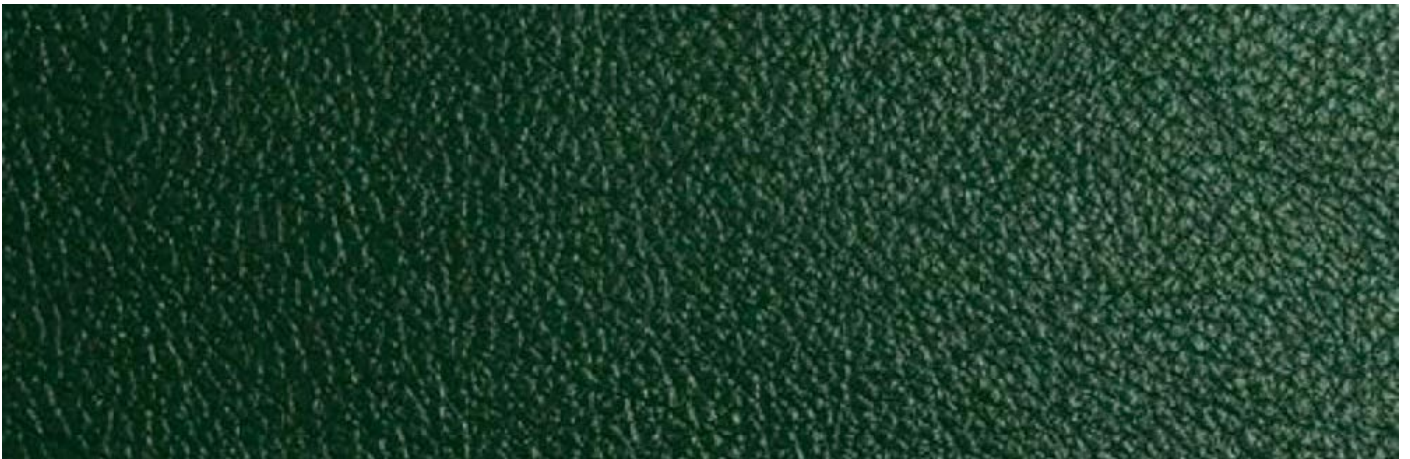
Madras bianco



Madras beige



Madras white perlato



Madras 94



Madras oliva



Madras 5588

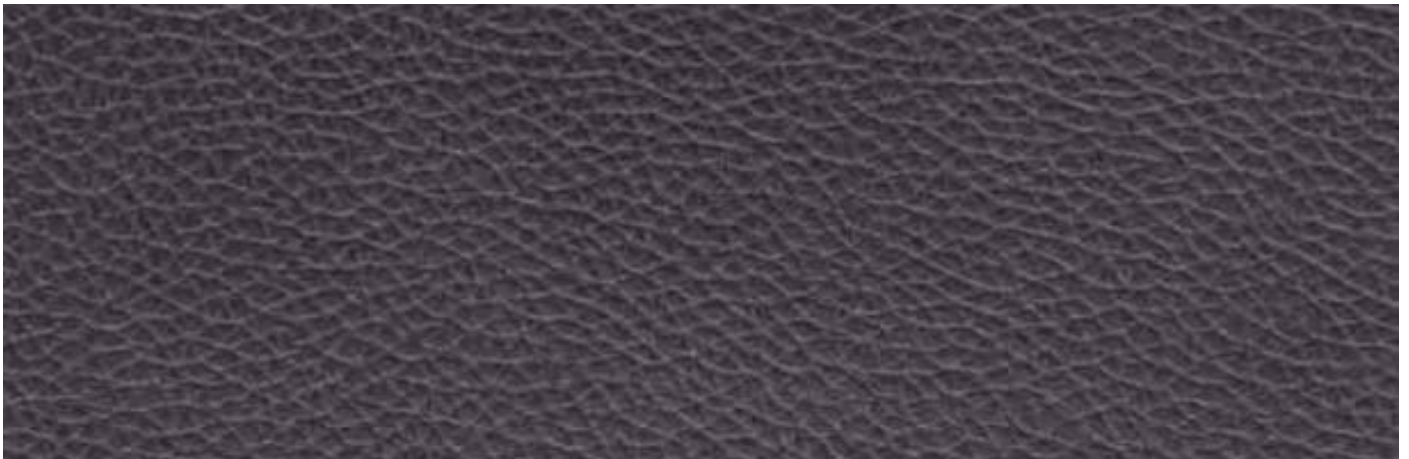


Madras whisky



Madras t-1

ECO LEATHER



Bionica Asphalt

670 g/m² | 150000^{cycles}



Bionica Diamond

670 g/m² | 150000^{cycles}



Bionica Blueberry

670 g/m² | 150000^{cycles}



Bionica Bounty

670 g/m² | 150000^{cycles}



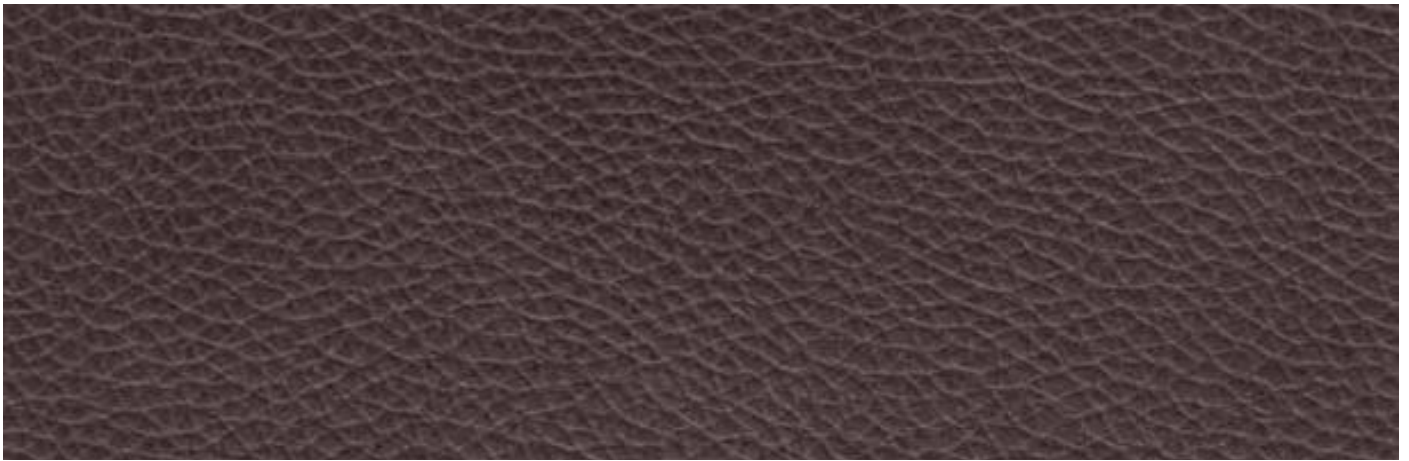
Bionica Cream

670 g/m² | 150000^{cycles}



Bionica Ecu

670 g/m² | 150000^{cycles}



Bionica Espresso

670 g/m² | 150000^{cycles}



Bionica Ferrari

670 g/m² | 150000^{cycles}



Bionica Latte

670 g/m² | 150000^{cycles}



Bionica Nut

670 g/m² | 150000^{cycles}



Bionica Pannacota

670 g/m² | 150000^{cycles}



Bionica Shadow

670 g/m² | 150000^{cycles}



Bionica Taupe Grey

670 g/m² | 150000^{cycles}



Bionica Whiteshine

670 g/m² | 150000^{cycles}

